



Instinctive Reading Intelligent Scanner



General Description

The Gryphon™ reader series has been developed by Datalogic to provide outstanding reading performance and excellent ergonomic design combined with unmatched durability.

The balance of top-of-the-range features and extreme versatility of the Gryphon™ makes it the ultimate solution for many applications in retail as well as in light industrial environments where low resolution and/or damaged codes need to be read without problems.

The optimized optics of the Gryphon™ series allow reading of the most popular standard codes with superior depths of field from near contact to over 1.4 ft / 43 cm (long range version). The "green spot", (Datalogic patent application) produced by the Gryphon™ provides "good reading" feedback directly on the code, useful in under-lighted or noisy environments.

Gryphon™ connectivity is now further expanded thanks to the introduction of new multi-interface models (Wedge, USB, RS-232 and Wand), the D130 and D230. Besides these models, the new Gryphon™ Long Range model D130 LR is also now available. This new model offers long range reading distances, up to 1.4 ft / 43 cm (13 mils resolution for EAN and 100% UPC codes). In addition, the Gryphon™ readers also read GS1 Databar (RSS), an emerging symbology that can be printed on a smaller label which meets emerging market needs for a greater amount of data on a symbol.

The Gryphon™ M100 and M200 models supported by the DATALOGIC STAR™ cordless system, the most reliable radio in the market which allows operations anywhere mobility is required at the Desk/POS and around the shop floor, as well as in small warehouses.

www.datalogic.com

Features

Gryphon™ Desk

- > Reads most common linear bar codes including GS1 Databar and PDF417
- > Multi-interface and specific models available (IBM46xx, ESD)
- > Fast reading speed: 270 scans/sec
- > Excellent reliability: less than 0.5% yearly failure rate
- > Reading range from 1.4' / 0 to 43 cm
- > Outstanding performance when reading damaged codes
- > Full range of accessories available
- > Compatible with all Datalogic cables

Gryphon™ Mobile

- > 433 MHz or 910 MHz Radio System
- > Multiple Scanner Support: up to 16 scanners simultaneously
- > Radio Range 49.2' / 30 m
- > 100% compatible with STAR-System™
- > Sunrise 2005 compliant

Applications

- > Data capture in retail and office environments
- > Suitable for any residential environment or wherever instinctive reading distance is preferred
- > Small warehousing
- > Light industrial manufacturing

Specifications

MODELS

SENSOR
MAX. SCAN RATE
MAX. RESOLUTION
PRINT CONTRAST RATIO
READING ANGLE:
READING INDICATORS

BAR CODES (D130, M100)

(D230/M200 only)

PROGRAMMING METHOD
Manual
Automatic (with RS-232)
Sm@rtSet

INTERFACES
(D110 only)

ENHANCED FEATURES

CASE MATERIAL
AMBIENT LIGHT CONDITIONS
STORAGE TEMPERATURE
HUMIDITY
DROP RESISTANCE

ENVIRONMENTAL PROTECTION

MODEL

POWER SUPPLY
CONSUMPTION
OPERATING TEMP.
WEIGHT

GRYPHON™ D & GRYPHON™ M

CCD solid state (3648 pixels)
270 scans/sec
3 mils / 0.076 mm
15% (min.)
Skew: ±80°; Pitch: 65°; Tilt: ±35° (EAN13, M=0.8, PCS=0.9)
Good Read LED, "green spot" on the code, adjustable tone "beeper"
2/5 family, Code 39 (plus Code 32, Cip 39), EAN/UPC, ISBN/ISSN, EAN 128, Code 128, ISBT 128, Code 93, Code 11, CODABAR, TELEPEN, PLESSEY, Code MSI, Code Delta IBM, GS1 Databar
Code 16K, Code 49, PDF 417

Reading special bar codes
S/W commands through the serial port
Windows configuration program
USB, RS-232, Wedge, Wand
RS-232 & IBM46XX Interface
Puzzle Solver™, data editing and data concatenation
ABS and Polycarbonate, plus co-moulded rubber
Up to 9290 foot candles / 100.000 lux
-4° to 158° F / -20 to 70 °C (without batteries)
90% non condensing
IEC 68-2-32 Test ED; withstands repeated drops from 5.9' / 1.8 m onto a concrete surface
IP30

GRYPHON™ D

5 VDC ±5%
250 mA operating, 330 mA max.
32° to 131° F / 0 to 55 °C
.40 lb / 180 g

MODEL

BATTERY TYPE
RECHARGE TIME
OPERATING AUTONOMY
OPERATING TEMP.
RADIO FREQUENCY

BIT RATE

EFFECTIVE
RADIATED POWER
RADIO RANGE

COEXISTING SYSTEMS
WEIGHT

CRADLE

POWER SUPPLY
POWER CONSUMPTION
READING INDICATORS

RECHARGE TIME
RADIO FREQUENCY

BIT RATE

EFFECTIVE
RADIATED POWER

COEXISTING SYSTEMS
MULTI-POINT

CONFIGURATION
WEIGHT
DIMENSIONS

OPERATING TEMP.
STORAGE TEMP.
CASE MATERIAL

GRYPHON™ M
2 AA NiMh batteries
3 hours max.
40,000 reads - NiMh
32° to 104° F / 0 to 40 °C
910 MHz (USA);
433.92 MHz (Europe)
36,800 baud (USA);
19,200 baud (Europe)
<1mW (USA);
<10 mW (Europe)
49.2' open air (USA);
30m open air (Europe)
2048 max.
.62 lbs (280 g) (with batteries)

OM GRYPHON™

9 to 28 VDC
8W max. (charging)
Battery charging (red);
Charge completed (green);
Power/Data (yellow)

3 hours max.
910 MHz (USA);
433.92 MHz (Europe)

36,800 baud (USA);
19,200 baud (Europe)

<1mW (USA);
<10 mW (Europe)

2048 max.
Up to 16 readers connected
to the same cradle

.55 lbs / 250 g
8.2" x 4.2" x 2.2"

208 x 107 x 55.5 mm
32° to 104° F / 0 to 40 °C
-4° to 158° F / -20 to 70 °C
ABS

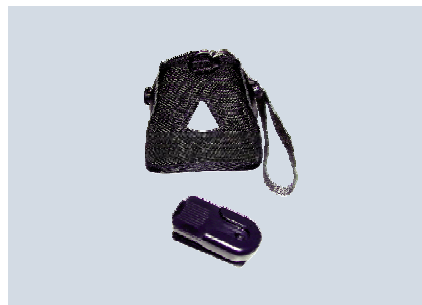
Accessories



Gryphon™ Stands



Gryphon™ Desk / Wall holders



Gryphon™ Protective case



OM - Gryphon™ / C-Gryphon™

Stand

The stand makes it possible to use the reader in a hands-free mode.

Desk/Wall Holder

The Desk/Wall Holder adds ease of use and flexibility in many environments where work space is limited.

Protective case-belt coupler

The Protective Case allows the reader to be carried on a belt when not in use and protects it against drops.

OM Gryphon™ / C-Gryphon™

The ergonomically designed cradle functions both as a radio station and a recharge base. The C-Gryphon™ offers a low cost alternative in a single recharge base.